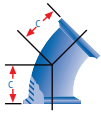


Conexiones para abrazadera Clamp ó Triclamp



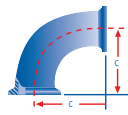
2 KMP
CODO 45° CLAMP

TAMAÑO PULGADAS	C
1"	1 1/8
1 1/2"	1 7/16
2"	1 3/4
2 1/2"	2 1/16
3"	2 3/8
4"	3 1/8
6"	4 15/32



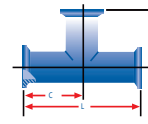
2 CMP
CODO 90° CLAMP

TAMAÑO PULGADAS	C
1"	2
1 1/2"	2 3/4
2"	3 1/2
2 1/2"	4 1/4
3"	5
4"	6 5/8
6"	10



7 MP
TEE CLAMP

TAMAÑO PULGADAS	C	L
1"	1 3/8	4 3/4
1 1/2"	2 3/4	5 1/2
2"	3 1/2	7
2 1/2"	3 1/2	7
3"	3 3/4	7 1/2
4"	4 1/2	9
6"	7 1/2	15



Férrulas Clamp Sanitarias Grado Alimenticio Farmacéutico

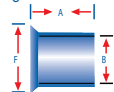
14 WMP

FÉRRULA CORTA CLAMP 1" - 10"



FÉRRULA CORTA P/SOLDAR

Largo de cuello 1/2"



FÉRRULA CORTA



FÉRRULA CORTA MINICLAMP EN 1/2" Y 3/4"

TAMAÑO PULGADAS	A MM.	B MM.	F MM.
1/2"	12.7	9.4	25
3/4"	12.7	15.75	25
1"	12.7	22.1	50.5
1 1/2"	12.7	34.8	50.5
2"	12.7	47.5	64
2 1/2"	12.7	60.2	77.5
3"	12.7	72.9	91
4"	15.8	97.4	119
6"	21.5	147.0	167

14 AMP

FÉRRULA LARGA PARA MAQUINA ORBITAL

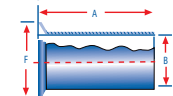


FÉRRULA LARGA CLAMP 1" - 6"

ILA LARGA LAMP EN 1/2" Y 3/4"

FÉRRULA LARGA

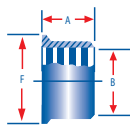
Largo de cuello 1 1/8"



TAMAÑO PULGADAS	A PULGADA	B MM.	F MM.
1/2"	1 1/8"	9.4	25
3/4"	1 1/8"	15.75	25
1"	1 1/8"	22.1	50.5
1 1/2"	1 1/8"	34.8	50.5
2"	1 1/8"	47.5	64
2 1/2"	1 1/8"	60.2	77.5
3"	1 1/8"	72.9	91
4"	1 1/8"	97.4	119
6"	1 1/8"	147.0	167

14 RMP

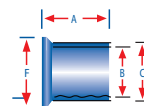
FÉRRULA PARA ROLAR O EXPANDER



TAMAÑO PULGADAS	A PULGADA	B MM.	F MM.
1"	1 1/8	22.1	25.4
1 1/2"	1 1/8	34.8	50.5
2"	1 1/8	47.5	64.0
2 1/2"	1 1/8	60.2	77.5
3"	1 1/8	72.9	91.0
4"	1 1/8	97.4	119.0
6"	1 1/2	147.0	167.0

14 MPW

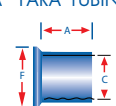
FÉRRULA GRUESA PARA SOLDAR A TANQUE



TAMAÑO PULGADAS	A PULGADAS	B PULGADAS	C PULGADAS	F MM.
1"	1 5/8"	.870	1.160	25.4
1 1/2"	1 5/8"	1.370	1.676	50.5
2"	1 3/4"	1.870	2.192	64.0
2 1/2"	1 3/4"	2.370	2.708	77.5
3"	1 13/16"	2.870	3.224	91.0
4"	2 1/8"	3.834	4.256	119.0
6"	2 1/8"	5.834	6.256	167.0

ASME BPE SF1

FÉRRULA ASME BPE FARMACÉUTICA ALTA PUREZA PARA TUBING BPE



TAMAÑO PULGADAS	A MM.	F MM.	C MM.
1/2"	44.5	25.4	12.7
3/4"	44.5	25.4	19.1
1"	44.5	50.5	25.4
1 1/2"	44.5	50.5	38.1
2"	57.2	64.0	50.8
2 1/2"	57.2	77.5	63.5
3"	57.2	91.0	76.2
4"	57.2	119.0	101.6

Abrazaderas Clamp Para Férrulas, Tapones Sanitarios Y Empaques

13 MHH

ABRAZADERA AJUSTABLE REFORZADA



	C
1/2" / 3/4"	15" / 16"
1	1 3/8
1 1/2	2 3/4
2	3 1/2
2 1/2	3 1/2
3	3 3/4
4	4 1/2
6	7 1/2

40 MPU-N

EMPAQUE CLAMP DE NEOPRENO "NBR" O BUNA GRADO ALIMENTICIO COLOR NEGRO PARA FÉRRULAS Y TAPONES CLAMP



40 MPU-S

EMPAQUE CLAMP SILICÓN TRANSLÚCIDO



40 MPU-T

EMPAQUE CLAMP DE TEFLÓN SÓLIDO COLOR BLANCO

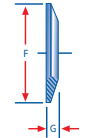


16 AMP

TAPON CLAMP O FÉRRULA CIEGA CLAMP



MINI TAPON CLAMP 1/2" Y 3/4"
TAPON CLAMP 1" - 8"

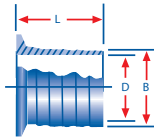


TAMAÑO PULGADAS	G PULGADAS	F MM.
1/2 y 3/4"	1/4"	25.4
1" y 1 1/2"	1/4"	50.5
2"	1/4"	64.0
2 1/2"	1/4"	77.5
3"	1/4"	91.0
4"	1/4"	119.0
6"	1/4"	167.0

Adaptadores

14 M P H R

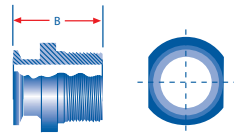
ADAPTADOR P/MANGUERA A CLAMP



TAMAÑO PULGADAS	B	D	L
1"	1.000	.875	2 1/2"
1 1/2"	1.500	1.375	2 1/2"
2"	2.000	1.870	3"
2 1/2"	2.500	2.370	4"
3"	3.000	2.870	4 1/2"
4"	4.000	3.834	4 1/2"

21 M P

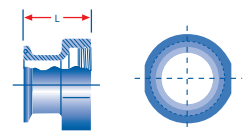
ADAPTADOR C/CUERDA N.P.T. EXTERIOR A CLAMP



TAMAÑO PULGADAS	B
1X1"	2 1/16"
1 1/2 X 1 1/2"	2 15/32"
2 X 2"	2 1/2"
2 1/2 X 2 1/2"	2 5/8"
2 1/2 X 2"	2 5/8"
2 1/2 X 2 1/2"	3 1/16"
3 X 3"	3 7/32"
4 X 4"	3 1/4"

22 M P

ADAPTADOR C/CUERDA INTERIOR N.P.T. A CLAMP



TAMAÑO PULGADAS	L
1X1"	1 13/32"
1 1/2 X 1 1/2"	1 23/32"
2 X 1 1/2"	1 23/32"
2 X 2"	1 3/4"
2 1/2 X 2 1/2"	1 3/4"
3 X 3"	2 7/32"
4 X 4"	2 15/32"

Uniones Sanitarias De Acero Inoxidable Grado Alimenticio-Farmacéutico

UNIONES SANITARIAS

Uniones Sanitarias Clamp (Compuestas de 2 Férrulas, 1 Abrazadera y 1 Empaque).



UNION SANITARIA IMPERIAL O CONECTOR DE DIN A PULGADAS

Uniones Imperiales

Por dentro son compatibles con las Tuercas Din pero por fuera son compatibles para soldar a Tubo Americano en Pulgadas.

Medidas Disponibles

Dn 50 en Mm Medidas Interiores a 2" Extremos Soldables.
Dn 65 en Mm Medidas Interiores a 2.5" Extremos Soldables.
Dn 80 en Mm Medidas Interiores a 3" Extremos Soldables.

UNION SANITARIA BEVEL SEAT THREADED HEXAGONAL 3A

14 Am7 + 15 Am7 + 13 H



Uniones Sanitarias

UNIÓN (SMS)



SMS	A	B
1"(25)	50	30
1 1/2"(38)	72	33
2"(51)	82	33
2 1/2"(63)	97	37
3"(76)	111	39
4"(102)	146	44

UNIÓN (DIN)

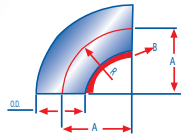


DN	A	B
10	38	26
15	44	26
20	54	28
25	63	30
32	70	30
40	78	31
50	92	33
65	110	35
80	125	39
100	146	45

Conexiones Sanitarias Soldables

2 A P 7

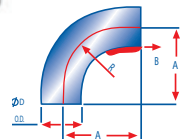
CODO 90° CORTO
SOLDABLE
TRADICIONAL



TAMAÑO PULGADAS	A	PARED B
1/2"	3/4"	.065
3/4"	1 1/8"	.065
1"	1 1/2"	.065
1 1/2"	2 1/4"	.065
2"	3"	.065
2 1/2"	3 3/4"	.065
3"	4 1/2"	.065
4"	6"	.083
6"	9"	.109
8"	12"	.109

2 S

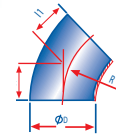
CODO 90° LARGO
SOLDABLE
TANGENCIAL



TAMAÑO PULGADAS	A	PARED B
1/2"	1 3/8"	.065
3/4"	1 3/4"	.065
1"	2 1/16"	.065
1 1/2"	2 15/16"	.065
2"	4 1/16"	.065
2 1/2"	5 3/16"	.065
3"	6 15/16"	.065
4"	8 5/16"	.083
6"	11 1/4"	.109

2 K S

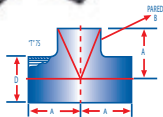
CODOS 45°
SOLDABLE



TAMAÑO PULGADAS	L1	D	R
1"	15.8	25.4	38.1
1 1/2"	23.8	38.1	57.2
2"	31.8	50.8	76.3
2 1/2"	39.7	63.5	95.3
3"	47.6	76.2	114.3
4"	63.5	101.6	152.4
6"	94.7	152.4	228.6

R E D U C C I O N E S

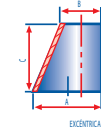
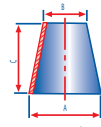
7W-TEE



TAMAÑO PULGADAS	A	PARED B
1/2"	1 3/4"	.065
3/4"	1 7/8"	.065
1"	1 7/8"	.065
1 1/2"	2 1/4"	.065
2"	3"	.065
2 1/2"	3"	.065
3"	3 1/4"	.065
4"	3 7/8"	.083
6"	5"	.109
8"	9"	.109

31W CONCÉNTRICA/ 32W EXCÉNTRICA

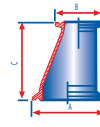
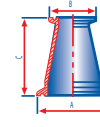
SOLDABLES



TAMAÑO PULGADAS	A	B	C
1"X3/4"	1.0	0.75	2.0
1 1/2"X3/4"	1.5	0.75	4.0
1 1/2"X1"	1.5	1.0	2.0
2"X1"	2.0	1.0	4.0
2"X1 1/2"	2.0	1.5	2.0
2 1/2"X1 1/2"	2.5	1.5	4.0
2 1/2"X2"	2.5	2.0	2.0
3"X1 1/2"	3.0	1.5	6.0
3"X2"	3.0	2.0	4.0
3"X2 1/2"	3.0	2.5	2.0
4"X2"	4.0	2.0	8.0
4"X2 1/2"	4.0	2.5	6.0
4"X3"	4.0	3.0	4.0
6"X3"	6.0	3.0	6.0
6"X4"	6.0	4.0	4.0

3114 MP CONCÉNTRICA/ 3214 MP EXCÉNTRICA

CLAMP



TAMAÑO PULGADAS	A	B	C
1"X3/4"	1.988	0.984	3.0
1 1/2"X3/4"	1.988	0.984	5.0
1 1/2"X1"	1.988	1.988	3.0
2"X1"	2.519	1.988	5.0
2"X1 1/2"	2.519	1.988	3.0
2 1/2"X1 1/2"	3.051	1.988	5.0
2 1/2"X2"	3.051	2.519	3.0
3"X1 1/2"	3.582	1.988	7.0
3"X2"	3.582	2.519	5.0
3"X2 1/2"	3.582	3.051	3.0
4"X2"	4.682	2.519	9.125
4"X2 1/2"	4.682	3.051	7.125
4"X3"	4.682	3.581	5.125
6"X3"	6.567	3.582	7.374
6"X4"	6.567	4.682	5.50

Válvulas Muestreo o Sacamuestras Sanitarias

1/4" NPT



1/2" MINI CLAMP



VÁLVULA DE MUESTREO
ASCÉPTICA PARA SOLDAR
A TANQUE 1"



1/2" NPT



1" / 1.5" CLAMP

